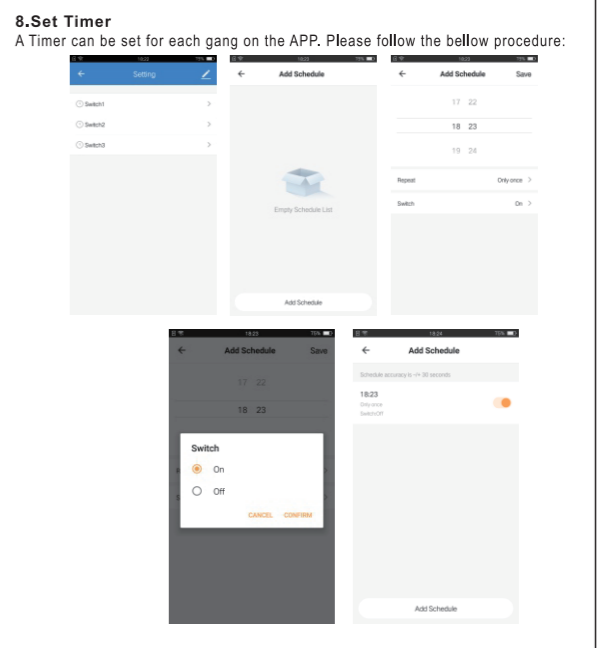
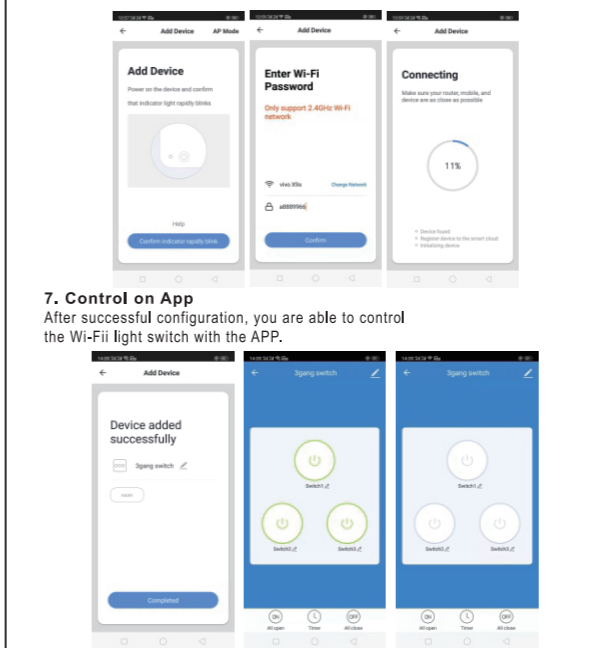
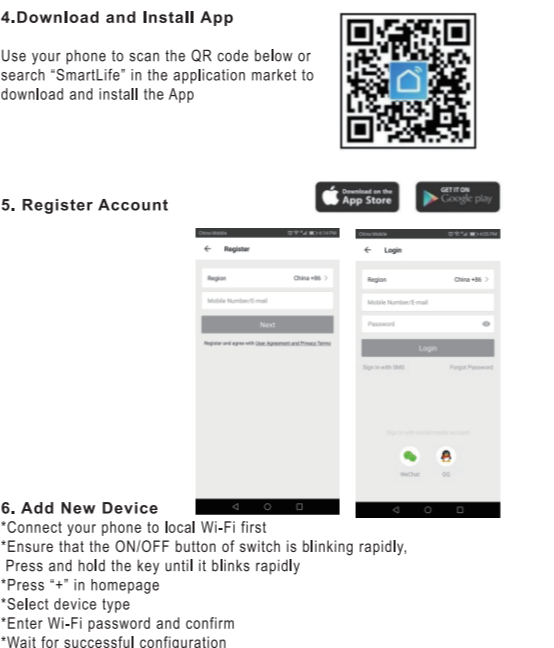
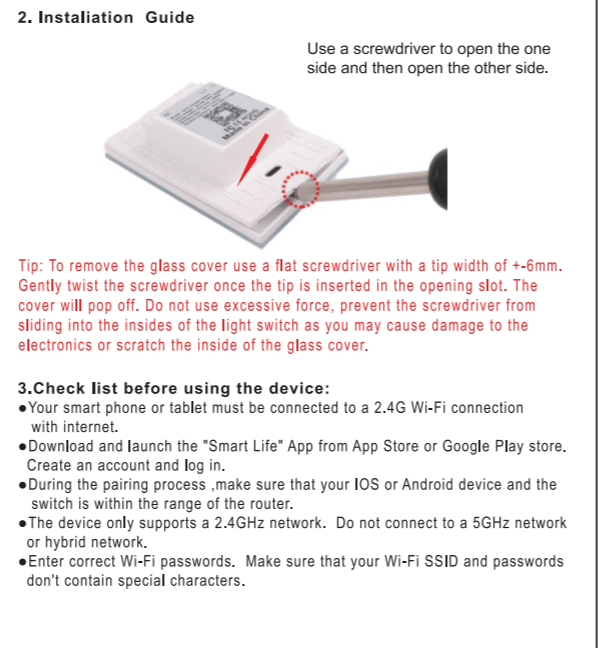
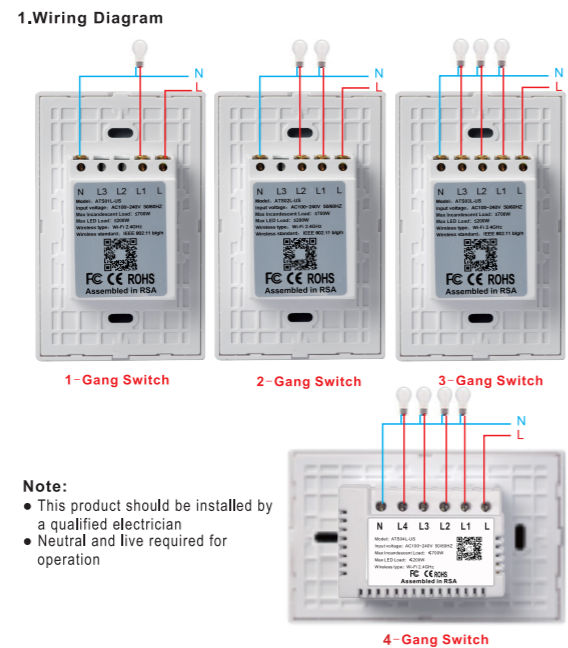
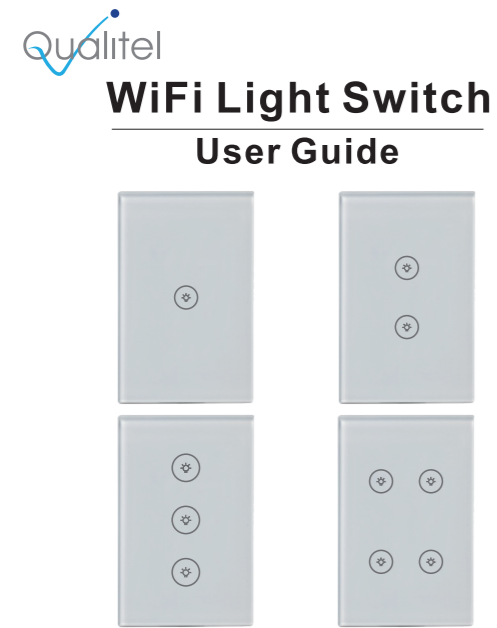


80.00MM

90.00MM



**9. Relay Status**

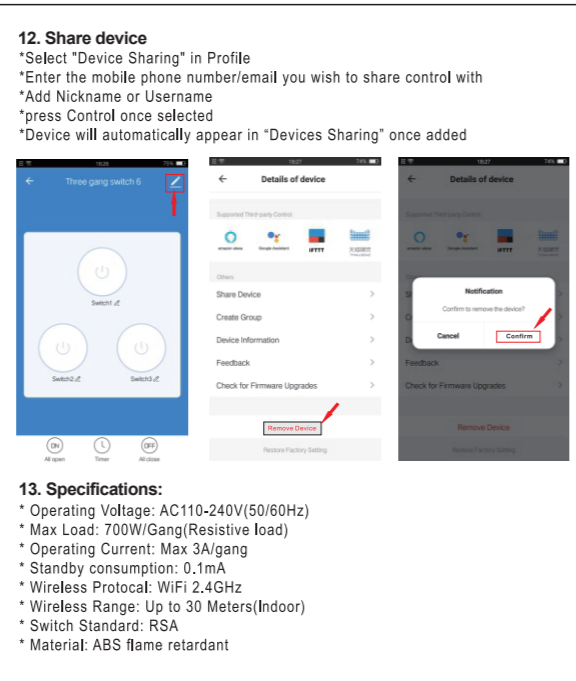
"If power memory is set to "ON" then the socket will turn on after a power outage.  
"If power memory is set to "OFF" then the socket will remain off after a power outage.  
"If power memory is set to "Memory" then the socket will resume working the same prior to a power outage.

**10. Light Mode**

Here the display of the indicator LED (on indicator) "Red Light" can be changed

**11. Backlight Switch**

When "backlight switch" is on then the Blue LED (off indicator) will illuminate.  
When "backlight switch" is off then the Blue LED (off indicator) will not illuminate



**14. Manually reset the device**

- Reset light switch.

- Press and hold any button of the device for 20 seconds until the light flashes indicating a successful reset;
- indicator light flash rapidly (flash 2 times every second) indicating fast mode;
- indicator light flash slowly (1 flash every 3 seconds) indicating hotspot mode;
- During fast mode, press and hold any button for 20 seconds until the indicator flashes slowly, indicating it has switched to focus mode; and vice versa.

**15. Works with Google Home Preparation**

- A Google Home device, or an Android phone with Google Assistant.
- Latest Google Home APP (Android only) and a Google account.
- The device display language must be set to English.
- Smart Life APP and a related account. Smart device. Sign in with Smart Life account, add the device, then change the name to a easily recognized word or phrase, like "bedroom light".

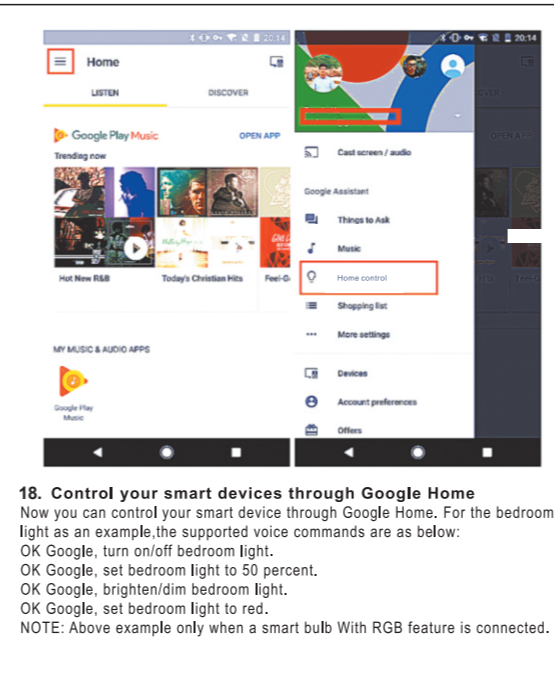
**16. Set up with Google Home APP**

- Open the Google Home APP and sign in with a Google account. Then connect the Google Home APP with your Google Home device and follow the Instructions of Google Home.
- Choose the Wi-Fi network you want to connect to your Google Home. Then follow the instructions to connect to google home. Make sure your Google Home APP and Google Home device, are connected to the same Wi-Fi network.

**17. Link Smart Life account in Home Control**

Attention: You are able to use only one Google Home Account to control "Home Control Action". If you sign in to Google Home APP with several Google accounts, only the first Google account you signed in can be used for "Home Control".

- Tap "Home Control" in the hamburger menu on the Google Home APP's Home Page, then tap "+".
- Find "Smart Life" in the list. In the new window, select your Smart Life account region, type your Smart Life account and password, then tap "Link Now". After you assign rooms for devices, your devices will be listed in the Home Control page.



**19. Works with Amazon Alexa Preparation**

- Amazon Alexa APP and account
- Smart Life APP and account
- An Echo device, including Echo, Echo Dot and Echo Tap.
- Smart device.

Sign in with Smart Life account, add the device, then change the name to a easily recognized word or phrase, like "bedroom light".

**20. Set up Echo with Amazon Alexa APP**

Sign in with Amazon account. Tap the Homepage on the top left, tap "Settings" and "Set up a new device". Then follow the instructions. Select an Echo device, press and hold the dot button on the top of your Echo device until the orange light illuminates and tap "Continue". Then select your Wi-Fi network and connect it to your device according to the instructions. This may take several minutes.

**21. Enable our skill in Alexa APP**

- Tap the Homepage, select "Skills", then search "Smart Life". Select "Smart Life" and tap "Enable Skill" to enable the Smart Life Skill.
- You will be redirected to the account link page. Enter your Smart Life account and password, do not forget to select the country/region which your account belongs to. Then tap "Link Now" to link your Smart Life account. When "Alexa has been successfully Linked", "Smart Life" is displayed, you can leave this page. (Note: If a Smart Life account has been linked before, you can use it directly, you can also tap "Disable Skills" to remove it.)

**22. Control your smart device through Echo**

- Echo need to discover your smart device first.
- You can say "Alexa, discover device" to Echo, or you can also tap "Discover Device" on APP to discover the smart devices. Discovered devices will be shown in the list. (Note: Every time you change the name of devices on the Smart Life APP, Echo must re-discover the devices before the control.) Now you can control your smart devices through Echo. You can use the following commands to control

your devices (e.g., bedroom light):  
Alexa, turn on/off bedroom light.  
Alexa, set bedroom light to 50 percent.  
Alexa, brighten/dim bedroom light.  
Alexa, set bedroom light to red.  
NOTE: The above instructions assuming a smart Bulb with RGB features is controlled.

You can also set up groups in Alexa APP. Tap "Create group", give your group a name like "my smart lights", select devices to add it in this group, then tap "Save". Now you can control your devices by group. If you say "Alexa turn on my smart lights", all the lights will be turned on.