



Model: QT2933

Corded analogue telephone

INSTRUCTION MANUAL

Before operating this Telephone instrument please read these instructions carefully.

INTRODUCTION

Thank you for purchasing a Qualitel product which adopts excellent workmanship and exceptional reliability.

Your telephone is designed to give you flexibility in use and high quality performance. To get the most from your new telephone, we suggest that you take a few minutes to read through this instruction manual to familiarize yourself with all the features of the product.

The product is guaranteed for 12 months from the date of purchase shown on your sales receipt. The guarantee does not cover damage caused by misuse or negligence or by excessive voltage. For example, faults on the telephone line or lightning.

SAFETY PRECAUTIONS

When using your telephone instrument, the following basic safety precautions should always be followed to reduce the risk of fire, electric shock and injury to persons:

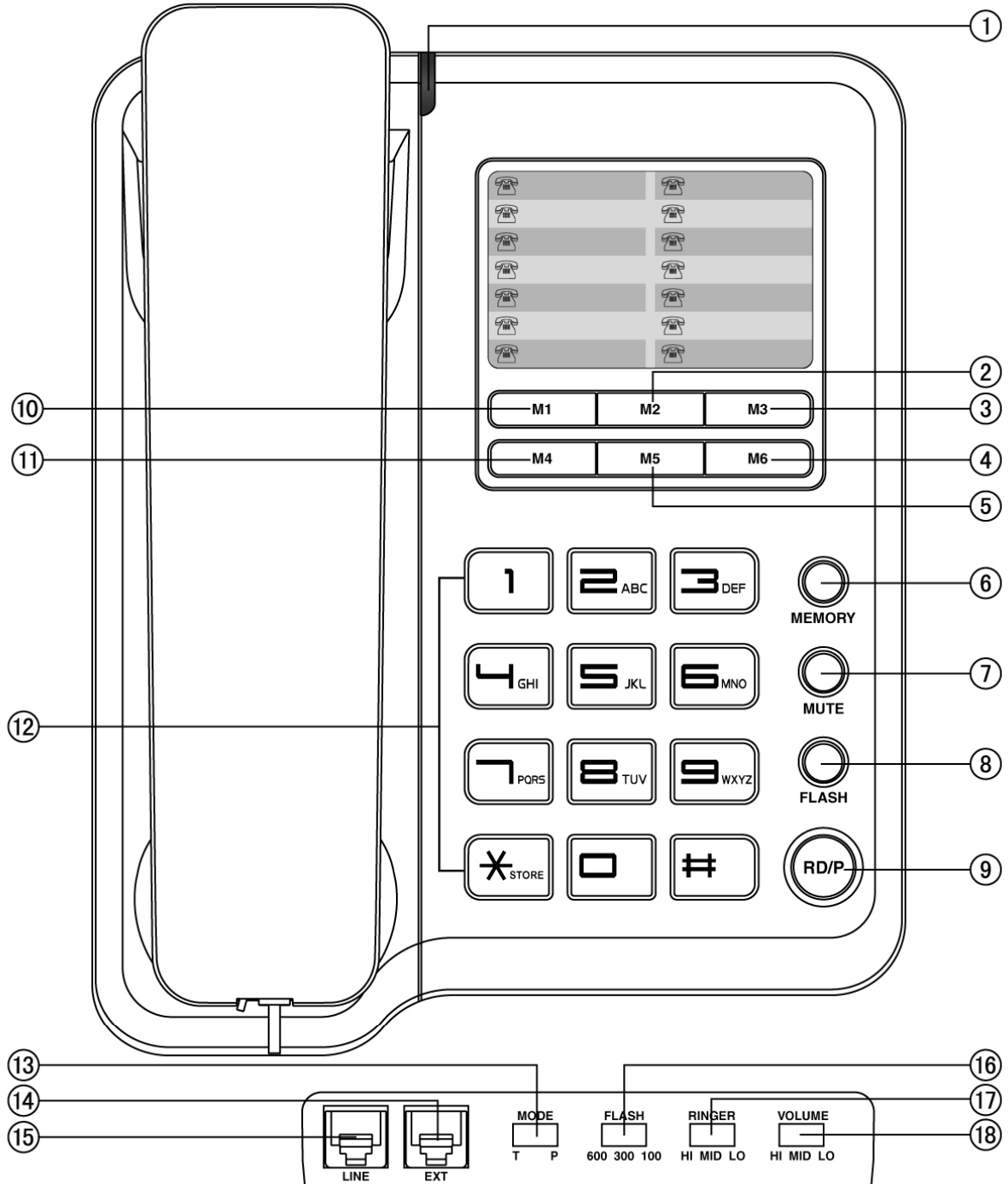
1. Read, understand and follow all warnings and instructions.
2. Unplug the product from the wall outlet before cleaning. Do not use liquid cleaning materials nor aerosols. Use a soft damp cloth for cleaning.
3. Do not place this product on unstable surfaces. The product may drop, causing damage to the product or injury to persons.
4. Do not overload wall outlets and extension cords as this can result in fire or electric shock.
5. Never push foreign objects of any kind into this product through the cabinet slots as it may affect dangerous voltage points or short circuit parts that could result in fire or electric shock. Never spill any liquids on the product.
6. Avoid moving or disconnecting this unit during a heavy storm, as there may be a risk of electric shock from lightning. Avoid conversations during electric storms.
7. Do not use this product in the vicinity of a gas leak.
8. Connect all leads / cords to the intended sockets.
9. Stow the line cord in a way that it can not cause injury to persons.

FEATURES

- 6 one-touch and 10 two-touch memories
- Last number redial
- Flash, Pause function for use behind a PABX
- Mute function (Mute the microphone during a conversation)
- Pulse/Tone dialing
- Adjustable flash time (100/300/600ms)
- Adjustable Handset volume
- Adjustable Ringer volume
- 2-step lock function

- In use & ringer LED indicator
- Desk / Wall mountable
- Hearing aid compatible

LOCATION DESCRIPTION



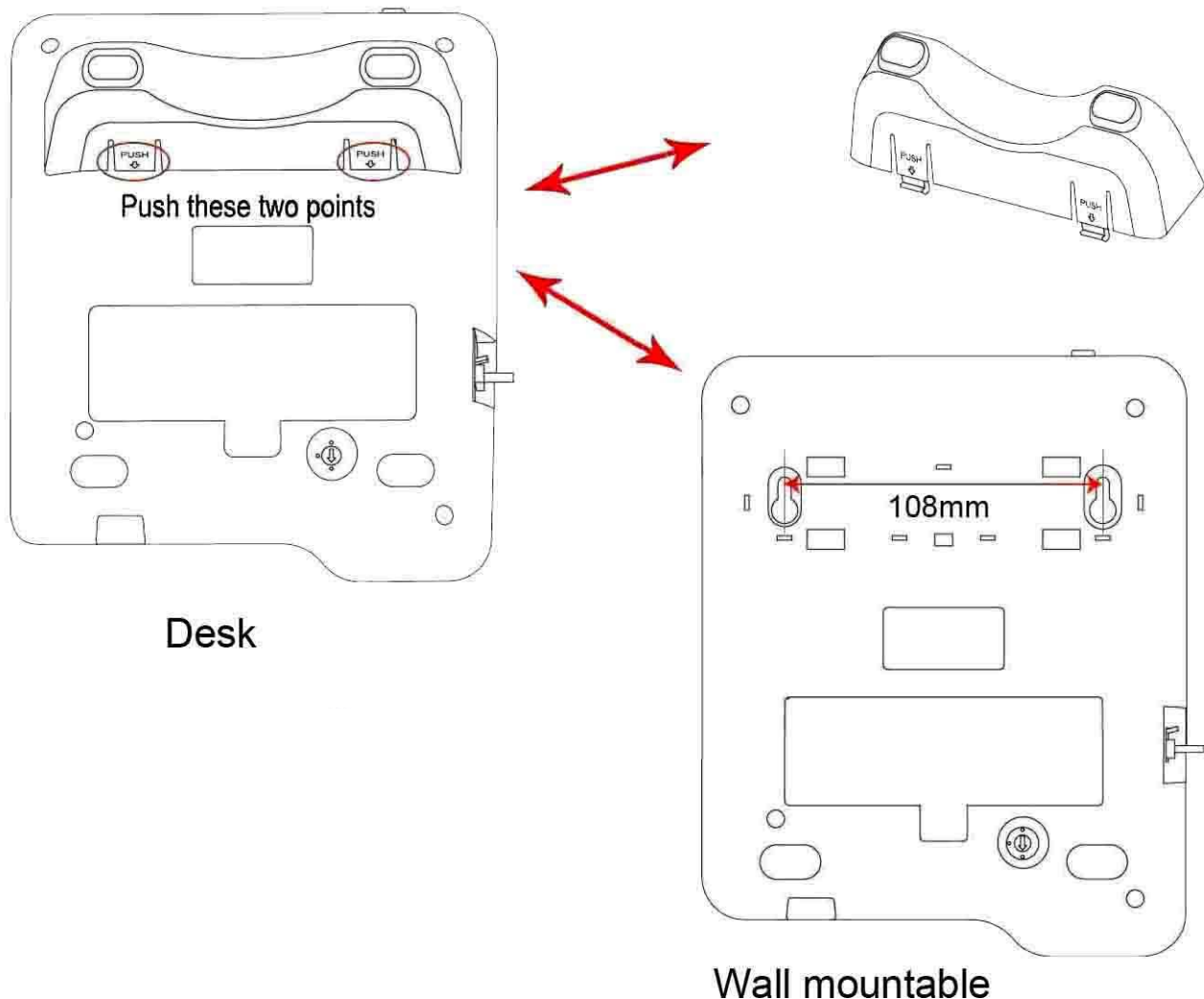
- | | | |
|--------------------------|--------------------|--------------------------------|
| ① In Use & Ringer Led | ⑦ Mute Key | ⑬ Pause Tone Switch |
| ② M2 Memory Key | ⑧ Flash Key | ⑭ Extention |
| ③ M3 Memory Key | ⑨ Redial/Pause Key | ⑮ Line |
| ④ M6 Memory Key | ⑩ M1 Memory Key | ⑯ Flash(Slide Switch) |
| ⑤ M5 Memory Key | ⑪ M4 Memory Key | ⑰ Ringer(Slide Switch) |
| ⑥ Memory Programming Key | ⑫ Dial Pad | ⑱ Handset Volume(Slide Switch) |

INSTALLATION

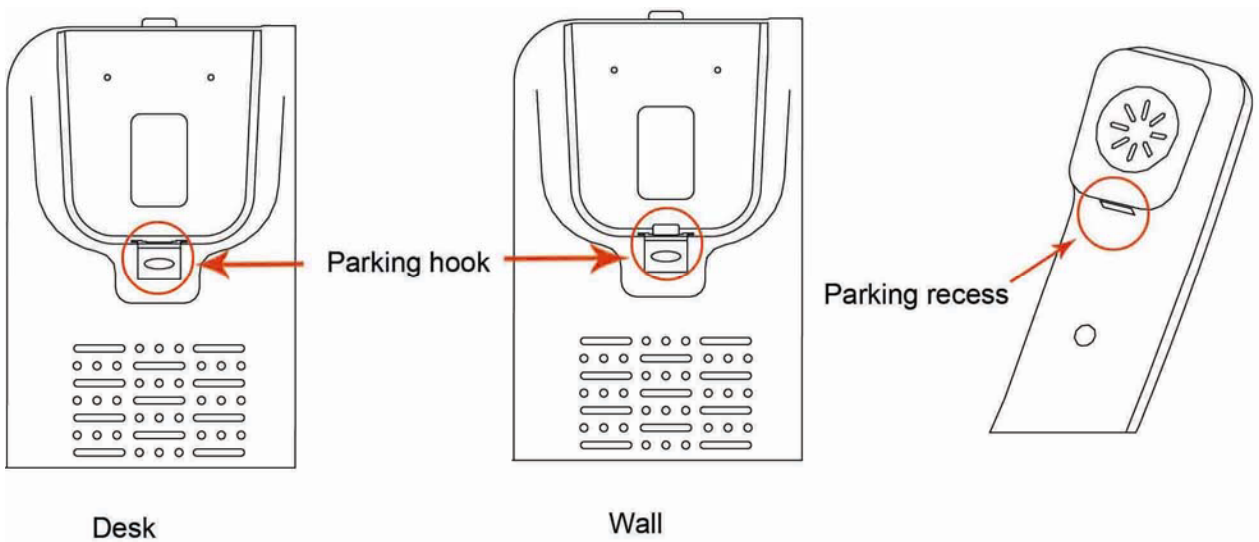
1. Plug one end of the line cord into the connector marked "line" on the base of the telephone and the other end into the wall socket.
2. Plug one end of the curly cord into the handset and the other end into the handset connector on the side of the telephone base.
3. Select your preferred ringer volume (High, Medium or Low). Set the ringer slide switch at the back of the phone.
4. Set the dial mode to PULSE or TONE dialing according to your local network (set the PULSE TONE switch).
5. Select your preferred handset volume (set the volume slide switch HI/MID/LOW)
6. Select the correct flash time. Set the flash slide switch to 100/300/600. Normally the flash switch should be set to position 100 for a flash time of 100ms.

WALL MOUNT INSTALLATION

1. The telephone can be wall mounted. Press both points marked 'PUSH' to remove the plastic stand-off. Once the plastic stand-off is removed the mounting slots for the wall mount screws will be visible. Mark two points 108mm apart on the wall. Drill holes into the wall 108mm apart. Insert plugs and screws (not included) in the wall and clip in the telephone base by inserting the screws into the wall mount slots at the back of the phone base. Adjust the screws if necessary.



- Slide out the parking hook as indicated. Turn it around and slide back into position again. Place the handset on the cradle with the parking hook on the cradle arranged to fit into the parking recess under the earpiece on the handset.



ANSWERING A CALL

- When the telephone rings pick up the handset and talk to the other party.
- End the call by replacing the handset onto the base of the telephone.

INITIATING A CALL

- Pick up the handset.
- When you hear dial tone, dial the desired number.
- To end the call, return the handset to the base.

➤ Redial

- Pick up the handset.
- Press the **RD/P** key, the last dialed number will be dialed again.

ONE TOUCH MEMORY OPERATION

➤ To store a number in one-touch memory

- Pick up the handset, then press and hold the ***STORE** key for 3 seconds until you hear a "di" tone.
- Enter the phone number you wish to store using the dial pad.
- Press **Mi(i=1~6)** key. The number is then stored in the selected memory key.

➤ Make a call from one-touch memory

Pick up the handset, then press **Mi(i=1~6)** key to dial the stored number.

TWO-TOUCH MEMORY OPERATION

➤ To store a number in two-touch memory

1. Pick up the handset, then press ***STORE** key for 3 seconds until you hear a “di” tone.
2. Enter the phone number you wish to store using the dial pad.
3. Press the **MEMORY** key.
4. Press one of numerical keys (0, 1, 2, ..., 9) on the dial pad to store the number under that chosen key.

➤ **Make a call from two-touch memory**

1. Pick up the handset, press the **MEMORY** key and then press the numerical key on the dial pad where under the desired number was stored (0, 1, 2, ..., 9).
2. The stored number is now dialed out.

FLASH FUNCTION

The flash function can be used behind a PABX when transferring a call to another extension. Press the flash key followed by the extension number. Normally the flash time should be adjusted to 100ms by setting the flash slide switch at the back of the phone to 100.

MUTE FUNCTION

During a conversation press and hold the mute key. The other party will not be able to hear your conversation. To restore two-way conversation, release the mute key.

PAUSE

When dialing, press the **REDIAL/P** button to insert a 3.6s pause time between digits. This function is used behind a PABX. Insert the PAUSE between the PABX access digit (usually 0 or 9) and the number to be dialed. Use this function when you want to redial a number or when you store a number in memory.

P-T SWITCH

Adjust the **MODE** switch at the back of the phone to **T** for Tone dialing or **P** for Pulse dialing. Normally this switch should be set to **T**.

ADJUSTING RINGER VOLUME

Slide the **RINGER** switch to **HI** (High) or **MID** (Middle) or **LO** (Low) to adjust the ringer volume.

ADJUSTING HANDSET VOLUME

Slide the **VOLUME** switch to **HI** (High) or **MID** (Middle) or **LO** (Low) to adjust the handset volume.

LOCK

Turn the key at the bottom of the phone to:

- 1) **RED** – Then the keypad is active and all numbers may be dialed.

2) GREEN – All numbers starting with “0” are locked and may not be dialed.

NOTE: Emergency numbers starting with digit “1” such as 10111 can still be dialed when the lock is set to the green position.

TROUBLESHOOTING TIPS

- | | |
|--|--|
| No Dial Tone | <ul style="list-style-type: none">* Check hook switch to make sure it pops up |
| Can't dial out | <ul style="list-style-type: none">* Make sure Tone/Pulse is set to correct position according to telephone exchange requirement* Unplug the phone, wait 30 seconds and plug the phone back in* Check the phone line cord* Check that all connectors are firmly inserted in their sockets |
| Phone does not ring | <ul style="list-style-type: none">* Check the phone line cord* Could have too many phones on one line (the total REN of all phones should not be greater than the maximum for your area, usually 5). |
| Last number redial and/ or Memory dialing don't work on a PABX | <ul style="list-style-type: none">* When you first make a call try pressing the Pause Button for a pause between the outside line access digit (eg: 9 or 0) and the telephone number, you should later be able to redial the number.* If your PABX requires you to wait for a second dial tone before dialing the telephone number, press the Pause Button for a pause between the access digit and number. |